



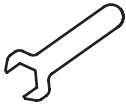
PRINTER STAND TOP PANEL

ATLANTIC
FURNITURE

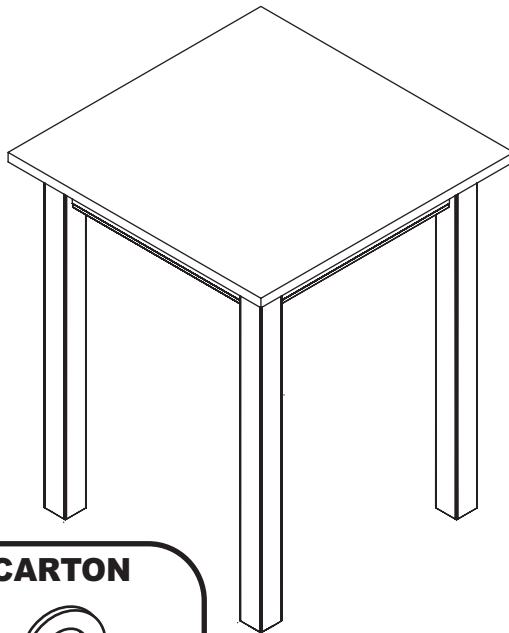
ASSEMBLY INSTRUCTIONS

Before assembling your Printer stand, please read through these instructions carefully, familiarising yourself with the different parts.

Hexagon Wrench



Assembling by Adult



PRINTER STAND SHOWN WITH SQUARE LEG

HARDWARE IN LEG CARTON

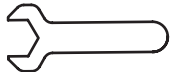
A Flat washer - 8 pcs



B Hexagon nut - 8 pcs



C Hexagon wrench - 1 pc



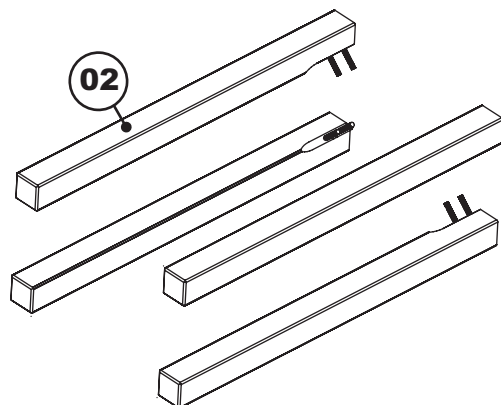
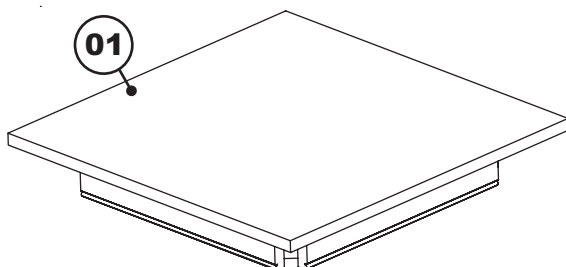
PARTS LIST

BOX 1 OF 2 — **01** TOP PANEL

1 PC

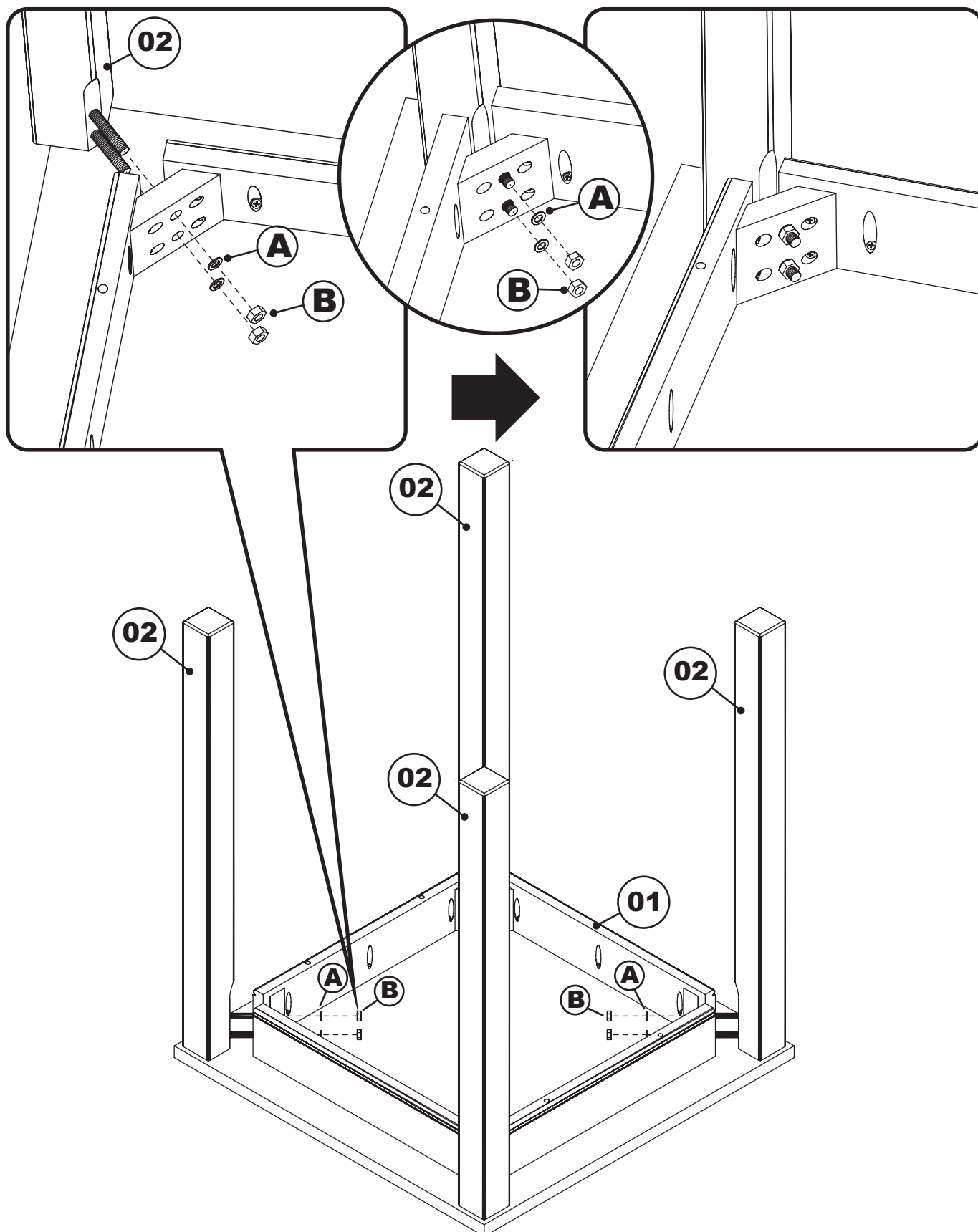
BOX 2 OF 2 — **02** LEG

4 PCS



STEP 1

Attach the legs (02) to the top panel (01) as shown below using flat washers (A) and hexagon nuts (B), tighten with hexagon wrench (C).



Congratulations !

Your Printer stand is now ready for use.

We recommend that you recheck that all screws are tightened, and that all parts are secure before use and periodically to ensure safety.